



Rattan Creek Neighborhood News

Serving Milwood at North Austin MUD # 1 since 1983

Distributed Every Other Month By The Rattan Creek Neighborhood Association, Vol. 23, No. 4

August/September 2008

Around Milwood

Rattan Fest



Sat, September 27th.



5K Fun Run Booths, Arts & Crafts.



**Rattan Fest will be held in the
new Community Center,
along with some activities that
will be held outdoors.**



Loose Dogs in the Park! Notice to dog owners!

- Williamson County leash laws apply in District Parks.
- Loose dogs are subject to pickup by animal control, and owners are subject to citations and fines.
- See park rules on page 16, rule 9.

EVENTS

August

- Aug 9 Cub Scout Pack 159
Come join the cub scouts
Rattan Creek Park
- Aug 20 MUD Meeting, 6:00pm
9511 RR 620 North
- Aug 26 School Starts
- Aug 28 RCNA meeting, 7:00pm
RC Park pavilion

September

- Sept 1 Labor Day Holiday
- Sept 11 Patriot Day
- Sept 17 MUD Meeting, 6:00pm
at Rattan Creek
Community Center
- Sept 25 RCNA Meeting, 7pm
RC Community Center
- Sept 27 Rattan Fest
5K Fun Run, Arts & Crafts,
Booths and more!
7:30 am Fun Run starts
8:30 am Pancake Breakfast
10:00 am Booths Open
10:00 am Blood Drive Begins
- Sept 30 Rosh Hashanah

October

- Oct 15 MUD Meeting, 6:00pm
at Rattan Creek
Community Center
- Oct 23 RCNA Meeting, 7pm
RC Community Center

Visit our website at
www.rattancreek.org

RCNA Board of Directors

P.O. Box 200584

Austin, Tx 78720-0584

Website: www.rattancreek.org

RCNA Board of Directors:

President Brian Kerman 921-4490

Email: brikerm@austin.rr.com

Vice-Pres. OPEN

Contact Brian 921-4490 for information

Secretary Jill Kaml 569-6464

Email: homes@jillkaml.com

Treasurer OPEN

Contact Brian 921-4490 for information

Ass't Treasurer/Secretary

Dallas Hall 257-3494

RCNA Committees:

Architectural Control Committee:

Email: RCNAACCVS@aol.com

Events Coordinator: Dallas Hall 257-3494

Membership: OPEN

Neighborhood Watch: OPEN

Email: watch@rattancreek.org

Safety/Security: OPEN

Email: safety@rattancreek.org

Website Administrator: Mark Maxwell

Email:

Newsletter:

Editor: Jo Jones 335-1805

Email: jojones@yahoo.com

Classified Advertising/Teen Services:

Kelly Buczek 258-6482

Email: kelly@catscradle.us

Display Advertising: OPEN

Contact Jo, Editor 335-1805 or information

Distribution:

Dave and Jennifer Cazares 257-3380

Milwood Parents Group:

Grace Ferrell 336-7671

Email: graceferrell@earthlink.net

New Neighbors/Babies:

Kathleen Edwards 350-2649

Email: austinredkat@yahoo.com

Recipe Corner:

Natasha Randall 996-8531

Email: arandall5@austin.rr.com

Yard of the Month:

Angelia Moore 694-1115

Email: AMoore@advso.com

The Rattan Creek Neighborhood News welcomes your letters and guest columns. Letters must have a verifiable signature. Guest columns and letters will be printed on as space available basis. Neither the Rattan Creek Neighborhood News nor the Rattan Creek Neighborhood Association accept responsibility for the opinions expressed in editorials, letters or guest columns. The Rattan Creek Neighborhood News reserves the right not to publish any submissions and the right to edit all submissions. Mail to the following address:

Jo Jones, RCNA Editor, 13119 Green River

Trail, Austin, Tx 78729 or e-mail:

Page 2 **JoRJones@yahoo.com**

Architectural Control Committee Information:

Any submissions for ACC approval will need to be sent to:

RCNA –ACC

13359 N Hwy 183, Ste B-406 PMB # 237

Austin, TX 78750

For more information, please see inside on page 24.

Or contact Chuck Simms for more specific information needed via email:

If you need copies of your Deed Restrictions:

You can contact **PBF Covenant Management, L.L.C.**

202 Walton Way, Ste 192, Box 142

Cedar Park, Tx 78613-7046

- There is an \$ 8.50 charge for the copies. Once you have paid for the copies, a set will be mailed to you.
- You will need your legal description (ie. lot, block, and section of Milwood), so you get the correct set of deed restrictions for your section.

Block Captains deliver newsletters 6 times a year to homes on their street. If your street is one of the ones mentioned above, you will not receive newsletters until someone steps forward to deliver to your block. Extra Newsletters are available at the sign at the Rattan Creek Park. *Numbers in () is the number of houses.*

Section heads are the start to our delivery process. They must be willing to work quickly to get the newsletters out to the block captains. They receive the newsletters in bulk and break down the count and deliver to the number of block captains in their area. The number of deliveries are in the ().

If you would like to volunteer as a Block captain or Section head, please contact Jennifer or Dave at 257-3380.

President's Notes

Wow, it is HOT out there! Welcome to Summer! We hope that you are enjoying all of this wonderful clear weather. Wouldn't it be great to take a dip in the pool right about now? Well, we are so fortunate to live in a wonderful community that has outstanding recreational facilities like Milwood? Activities at our pool at Rattan Creek Park are getting back to normal now that the majority of the construction on our brand new Community Center and Bathhouse are nearing completion. The deep water section of the pool has reopened, and there is a lot of action on the waterslide also. Don't miss out!

Your Neighborhood Association works hard to help to improve the quality of life for all residents. We offer fun recreational and social activities. There are two activities coming up that I want to encourage you to attend. Firstly our 2nd annual Neighborhood Night Out is scheduled for Tuesday evening, August 5th at 6 PM at the Rattan Creek Park. Come out and join your neighbors and friends for a special night out. Last year we had a great evening where everyone joined in and got to know each other. We will once again be supplying refreshments and goodies. Please mark your calendar for this fun night out.

Speaking of fun activities, our planning is in high gear for our annual Rattan Festival featuring a 5K Fun, Run, Vendor Booths, lots of food, activities for the kids and tons more! This special event has been an annual event that is one of the highlights of the programs and services we offer to the Milwood community. We can not continue to provide incredible events like Rattan Fest without your help. As we are all volunteers, we need more willing folks to step forward. Rattan Fest is a huge undertaking. Realizing your time is very valuable, we can use as little or as much time as you can spare. Please call Dallas Hall at 257-3494 if you would like to lend a hand.

Over the next few weeks you will notice that our website: www.rattancreek.org will have a new and exciting look. Please take a moment to visit the site so that you can keep up on all of the activities that are taking place in our community.

Our Board and committees work hard to provide fun events. We are a small group of volunteers who meet monthly. We have a few positions open on our Board. As our Community Center is nearing completion, we are ramping up to provide additional activities for everyone to enjoy. But we need your help! Please contact me via e mail at brikerm@austin.rr.com if you are interested in joining us. As a voluntary association we depend on annual contributions of \$25.00 which help fund our work. Please see the membership coupon in this newsletter and show us your support and join YOUR neighborhood Association.

Please remember that with school out until the end of August, there are tons of our children enjoying life in our community. Please be mindful of speed limits, yield to folks in crosswalks and be mindful of runners and bike riders sharing our streets. We want to continue to live in and enjoy how safe our community is, but we will not be able to do so unless everyone does their part.

In closing I want to say that I hope you will take moment to stop by Neighborhood Night Out and Rattan Fest. Please take a moment to visit our information tables at each event and say hello. The RCNA Board and I would love to meet all of our neighbors!

Brian Kerman, President
Rattan Creek Neighborhood Association
www.rattancreek.org

NOW OPEN... A New Chase Branch

VISIT US TODAY

Parmer and McNeil inside HEB
6001 W Parmer Ln
Austin, TX 78727

Lobby Hours:
Monday-Friday 9:00am-7:00pm
Saturday 9:00am-5:00pm

Expect more from Chase.

- **Checking:** Free access to 8,500 Chase ATMs, free Visa® Check Card and free Online Bill Pay with qualifying accounts
- **Savings:** Variety of accounts for every savings goal
- **Credit Cards:** Wide range of rewards and partners¹
- **Home Equity:** One of America's leading home equity lenders
- **Mortgage:** Home loans for every need
- **Investments:** A full-service investment firm with personalized products and services from Chase Investment Services Corp.*
- **Business Banking:** Unparalleled expertise

Contact Branch Manager Michelle A. Kelley at 512.250.1240 for more information.

CHASE

Visit www.Chase.com/careers for employment opportunities with Chase.

Austin Quality Siding And Windows

Free Estimates
Siding
Windows
Painting and Repairs
Pressure Washing

Spring
Sale

Office (512) 219-0526
Cell (512) 905-1463

All loans and lines subject to credit and property approval. Terms and conditions subject to change without notice. Not all products available in all areas for all concerns. Other restrictions and limitations apply.

1. Subject to credit approval. Chase credit cards are issued by Chase Bank USA, N.A. and may be serviced by its affiliates.

* Securities and investment advisory services are offered through Chase Investment Services Corp. (CISC), CISC, a member of FRISA and SIPC, is an affiliate of JPMorgan Chase Bank, N.A.

JPMorgan Chase is an equal opportunity and affirmative action employer m/f/h/v. Deposit products provided by JPMorgan Chase Bank, N.A. Member FDIC.

© 2007 JPMorgan Chase & Co. All Rights Reserved.

INVESTMENT PRODUCTS:
• NOT FDIC INSURED • NO BANK GUARANTEE • MAY LOSE VALUE

NOWOP-11.07

Around Rattan Creek

New Neighbors and Babies:

New Neighbors

Please help us welcome the following new neighbors to Milwood! If you live near them, stop by and welcome them to our neighborhood:



Jean Hagood at 7521 Peabody Drive

New Babies

Luke Jacob Dennis

Born April 7th

Proud parents: John and Alicia Dennis

Proud Siblings: Morgan, Carly, Hope, Lilly and Shane



Noah Mathew Spexarth

Born June 2nd. 7 lbs, 3 oz. 19 3/4 inches long

Proud parents: Mathew and Jayme Spexarth

If you know someone has just moved into the neighborhood, or just had a baby, help us to welcome the new folks and/or congratulate our neighbors on their special event. Please contact Kathleen Edwards at 350-2649, Or email to her at austinredkat@yahoo.com

Milwood ParentActivities



Looking for a playgroup for your little ones? Here are a couple to chose from:

- **Bunco Anyone?** New group forming. Contact Christy Traywick at cwtraywick@hotmail.com or 219-9372 for more details.
- New playgroup for babies/toddlers born between September 2005 – August 2006. Contact Debbie Waller at 215-2878 or dwall75@yahoo.com.
- Playgroup for babies (and their Moms) with birth dates from around July/August 2003 to 2004: Preferably contact Carolyn Brown via e-mail at carolyn@carolynelaine.com or call 922-3991.
- Arbor Homeschool Group: Weekly playdays, monthly field trips and various other activities. All ages welcome! Contact Toni McKinley at 250-0496 or e-mail at tmckinley1@yahoo.com for places and times we meet.
- Do you work out of your home? If you are self-employed or otherwise office out of your Milwood house, how would you like a little company? We can get together over coffee once a month or so and keep up with what's going on in the world. Please call Susan Morrow at 257-2737 or e-mail me at smorrow@wordsarewe.com

Post a message!

Would you be interested in meeting other moms at the playground?

Do you like to scrapbook and would like to do it with others?

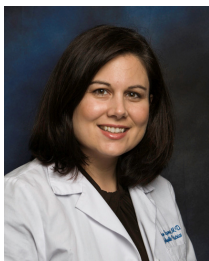
**Contact Grace at 336-7671
or graceferrell@earthlink.net
to have your message posted.**



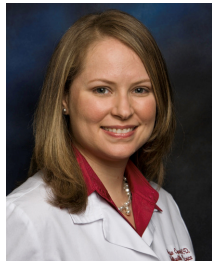
Jollyville Pediatrics

11851 Jollyville Rd. Ste. 204
Austin, TX 78759

p: 219-5550 f: 219-5551



*Evelyn Spencer,
M.D. FAAP*



*Nitzia Cepeda,
M.D. FAAP*

**Same day sick appointments
and sports physicals**

M-F 8:30 AM -5:00 PM

Accepting new patients from birth to 18 yrs
Most insurance plans accepted

Free prenatal classes for expectant parents

Visit www.jollyvillepediatrics.com for more info

LIFE DOESN T STAND STILL AND NEITHER SHOULD YOUR INVESTMENTS

Jason P. Dickerson

Investment Representative

To see if rebalancing makes sense, call or visit today to request a free Portfolio Review.

6001 W. Parmer Ln, Ste 210
Austin, Tx 78727
(512)219-1191

www.edwardjones.com
Member SIPC

Edward Jones

MAKING SENSE OF INVESTING

More on Watering and maintaining yards in August and September

Usually in August, the hot dry summer months are still here and the yearly grind of hauling hoses and watering the lawn continues. If you have an automatic underground irrigation system, you may be bracing for the usual high water bills. Regardless of the system you use, you can save time, money, and water by following a few simple guidelines to ensure you are watering your yard in the most efficient way possible.

Pots and hanging baskets

Note that pots and hanging baskets dry out the fastest due to sun and wind on the root ball. Keep these close to the most-used areas of the yard so you will notice the drooping leaves and water as needed. Keeping them in as much shade as possible will help too. Also mulch the top of the soil and insulate the sides of the pots (or grouping them together) to reduce the sun and wind access area to the pots.

When to Water:

The best time of day to water is very early morning (3 to 7 am) when the wind is calm, temperature low, and when moisture on the plant leaves will be evaporated by the sun soon and minimize fungus problems. Most plants can survive with less water than you think but you must wean them by developing deep roots; work

toward a 5 to 7 day watering cycle on your day to water.

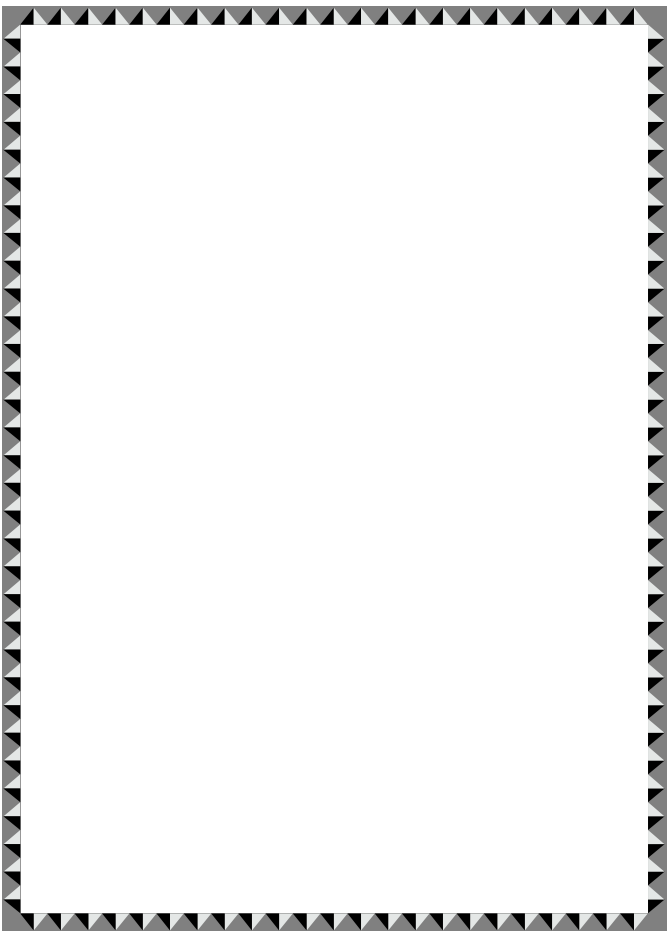
Always, the best way to determine if watering is needed is NOT the calendar. Last week it might have rained 4 inches OR, it might have been 100 degrees with a hot dry wind. If you have a sprinkler system with a rain cutoff, use in to minimize watering when it rains. Some controllers have a switch, so you can turn it on.

So, depending on the rain, you may not need to water for 14 days or you may need to water immediately no matter what the calendar says. Look at your plants, they will tell you their watering need when you walk around your yard. Water is needed when plants droop, lose their gloss, leaves curl inwards or take on a grayish color. What they are doing is changing the exposure area of the leaves to reduce further evaporation loss. You will be able to see the clues.

Grass that is under stress shows footprints still an hour after being walked upon. To be sure, dig a hole in the soil. If it is dry 3 or 4 inches down, it is time to water.

Also, remember that full sun areas require more water. During the hot July to August months, you may need to develop 2 watering cycles, for full sun areas

(Continued on page 6)



*Full Service Real Estate Company
Serving Austin & Surrounding Areas since 1993*

- Buying
- Selling
- Leasing
- Investments
- **Free Market Analysis**
- **Talking House Program**
- **Move up Program**
- **First Time Buyer Program**

Jo R. Jones, ABR
Broker

Office: 335-4024 Cell: 633-2604
www.austinwhr.com

RCNA Member / Milwood Resident 16 years

RCNA Event Sponsor

RCNA Scholarship Fund donation for each sale I make in Milwood!

(Continued from page 5)

every 3-5 days and for shade areas every 5-7 days. This is the way the different zones or areas of automatic irrigation systems should be set up.

Different Watering Systems

There are two fundamentally different watering systems, **spray** and **soaker**. Spray systems include hose -end sprays, sprinklers, and underground sprinkler systems. Soaker systems include the soaker or leaky hoses and drip irrigation systems.

Another difference is how permanent the system is. I think we all would like a watering system that would sense when the plants need water and then turn on and deliver the most efficient amount of water at the right time of the day. Automatic systems are available but require some on-going maintenance and are difficult to change when plants are added or watering coverage is not correct. One of my neighbors calls his irrigation system his hobby!


Less permanent and easier to move systems are the soaker systems. There are tips below for installing and maintaining each of the spray and soaker systems.

How to Water with Spray Systems (hand or automatic) Deep, infrequent watering is the way to go, but how long to water is the question. The reliable method is to measure how much water your system is putting out in an hour. Spray system output can be

measured by placing 3 to 10 empty cans (tuna or cat food cans are the right size) at different distances and directions from the water source. Hose end sprayers will need fewer cans because coverage is the same wherever you move the sprayer. Underground systems require more cans to assure even coverage between the zones. Run each sprinkler zone for 30 minutes. Measure the number of inches of water in each can, add them together, and divide by the number of cans to get the average. To figure out the number of inches per hour your system is putting out, multiply the 30 minute average you just calculated by 2. Write this down for each zone and you will be able to lengthen or shorten the sprinkler on time as needed. Note that the variation in depth of water in each can gives you an idea how evenly your system distributes water.

In Austin, an inch of water is usually sufficient to wet the soil six inches down, reaching the root system of most turf grasses. Buffalograss, Bermuda grass, and most shrub and perennial root systems can reach down 12 to 18 inches, so you need to water these areas more deeply and less often. Most Austin soils are high in clay content and don't absorb water rapidly. Bi-yearly application of Dillo Dirt or other composted material will increase the absorption capability of soil over time. Absorption rate ranges from 1/10 inch to 1/2 inch per hour. In any case when you see water standing or running off,

(Continued on page 7)



ROBERTS
TERMITE & PEST CONTROL, INC.

- RESIDENTIAL • COMMERCIAL
- FREE ESTIMATES

• LIMIT ONE COUPON PER CUSTOMER
• NOT VALID WITH OTHER OFFERS
• MUST PRESENT AT TIME OF SERVICE

Ask for **RJ Avalos** **444-0132**
Milwood Resident/RCNA Member



Low Cost House Painting
by Austin Jones Enterprises,

Brad Jones
633-2605

Over 300 Homes Painted In Milwood

Quality Workmanship at a Reasonable Price

Interior/Exterior Painting
Hardie Siding Installation
at discount prices

Rotted Wood and Siding Replaced



Milwood Resident – 17 years
RCNA Member

INTERNATIONAL MUSIC SCHOOL

of



VIOLIN  **PIANO**

ANNA J. CHOI
Founder/Director

All Ages & Levels
Lessons, Recitals
Local/National Competitions
Music Theory, Ear Training
and Sight Reading

JUILLIARD SCHOOL alumna
International Resume
Tel/Fax : 512-250-0977
anna@annachoi.com

(Continued from page 6)

your soil is saturated. To get more total water absorbed, water half the time needed (or until runoff) and then wait an hour or so and come back and water the other half of the time. This is especially important if your yard is on a slope where water soaks in up to 80 percent slower and runs off faster. Sloped areas need shorter times and more often watering.

The correct time length needed for the 1 inch of water can be programmed into the automatic system controller for each zone. For hose end sprinklers, you can buy a kitchen timer to remind you to move the hose. Or, buy a hose timer (don't spend less than \$12 because they fail soon) so you can just set in the timer and it will shut the water off after the set time. Then you move the hose and reset the timer.

How to Water with Soaker Systems

Soaker hoses do not work well on large grass areas but work great on flower and vegetable beds. Because our soil is so heavy clay content, water does not move horizontally more than a few inches. A soaker hose in grass would have to be placed or moved every foot or so. Beds with well amended soil with Dillo Dirt or composted material worked in well will allow water to spread out more. The primary advantage to soaker systems is that they do not spray water onto the plants

causing fungus problems or causing much water to evaporate or be blown onto the driveway by the wind. Drip systems are operated in a similar manner. The main difference is that a small tube and an emitter is located at the base of every plant. The primary problem is that when a tube or emitter gets plugged up you do not know about it until after that plant is dead.

Soaker hoses work well with timers which can be set for 4 to 8 hours run time. (Again, hose timers costing less than \$ 12 will not work reliably at different flow rates.) The best method to determine the time needed is to lay out the soaker hose for good coverage of all the plant roots. Turn the faucet on 1/4 turn and note the time. If you turn the faucet open too far you will blow out parts of the soaker hose causing uneven coverage. Check coverage every hour until you see water running off somewhere or standing in a deep puddle to find out the length of time it takes to saturate your soil. Then dig a hole and see how deep the water reached. To get more depth of penetration, increase the time the hose is on. Now you can check the plants and soil periodically to see when the roots need more water and when needed you can turn the soaker hose on again at that pressure and for that time to assure deep watering. Soaker hoses are available in 100 foot lengths for

(Continued on page 8)

**LAW OFFICE OF
DANIEL R. GONZALEZ
ATTORNEY AT LAW, P.C.**

- PERSONAL INJURY - AUTO ACCIDENTS & WRONGFUL DEATH
- FAMILY LAW- DIVORCE, CUSTODY DISPUTES, ADOPTIONS , CHILD SUPPORT
- PROBATE & WILLS
- CRIMINAL DEFENSE – ASSAULTS, DRUGS, DWI ALL FELONIES AND MISDEMEANORS
- IMMIGRATION

****FREE INITIAL CONSULTATION
**CONSULTA GRATIS
SE HABLA ESPANOL



**Tel. (512) 219-9300
13284 POND SPRINGS RD
Suite 403
AUSTIN, TEXAS 78729**

(Take McNeil exit of 183 to Pond Springs Road)

Not certified by the Texas Board of Legal Specialization

**Rattan Creek Neighborhood Association
P.O. Box 200584 – Austin, Tx 78720-0584
Annual Membership Dues – \$25
(January – December 2008)**

Name _____ Phone _____

Address _____

Membership: Renewal New

E-mail: _____

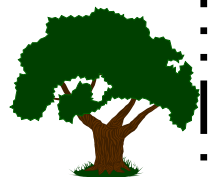
Add me to the Neighborhood Watch Alert List

I would like to volunteer to assist with:

Activities Committees Neighborhood Watch Newsletter

Additional Voluntary Contribution \$ _____

**Please pay your dues
today by mail
or you can pay online at
www.rattancreek.org!**



Thank You For Your Continued Support!!

(Continued from page 7)

around \$10.00. There is a vast array of clamp on connectors to splice, start, end, and Y sections of soaker hose. The only tools needed are a knife or large scissors, and a couple of screwdrivers.

Spray Equipment Suggestions

Since there are many types of spray heads and sprinklers, some general principles may help you select the best ones for your yard. Sprayers loose a lot of water by evaporation and by blowing by the wind. Look for sprayers which do not spray high in the air and which **do** send out large droplets or streams of water to minimize loss. It takes time to see how well a sprayer is covering the area with a given water valve setting.

Soaker Equipment Suggestions

Since soaker hoses are easy to move and position and quite inexpensive, an easy method is to make up a "leaky Hose" type soaker hose for each bed where it can be left in place and the hose connected and timer set as needed. Home yard stores have 100 foot rolls of soaker hose and inexpensive fittings (even push-in) for connections and ends and even "Y"s with flow control valves in each leg. Once the hose is in place and tested for coverage of all plants, a 3-inch layer of mulch on the bed will assure that all the water goes down to the roots of the plants and that little evaporates. I keep some hose splices around and when I see a plant area

under-watered, I cut the soaker hose and splice in a loop of extra hose serpentine around the area. Fluffing up or adding mulch finishes the change.

Drip System Problems

Drip systems with emitters or leaky tubing may be inexpensive but they are difficult to hold in place and impossible to check if they are plugged without pulling the entire system out on top of the bed and running water through it. Even then it is difficult to decide which plant needs a 1 gallon per hour emitter and which a 2 gallon per hour emitter. I have installed a few drip and soaker systems and have talked with dozens of others at Xeriscape Garden Club meetings and it is generally agreed that the leaky hose systems are easiest to test and change for the best water coverage for beds.

Bug problems

The bug attacking your St. Augustine grass which is suffering from the drought is a chinch bug. They like it when it is hot. If you see dry brown grass in hot sunny areas of your lawn, and you are watering properly, chances are you have chinch bugs. They can destroy a lawn in 2 or 3 weeks. The adult chinch bug is black with white markings on the wings. It is small but if you look very closely you should be able to see them. There are organic products like Insecticidal Soaps,

(Continued on page 9)

Tired of standing in line at the post office?
Come visit us today for hassle free shipping!



M-F 9AM – 6PM
Sat 10AM – 3PM

15% OFF SHIPPING or PACKAGING
(10% OFF APO/FPO Shipping – Other USPS not included)

13359 N Hwy 183, Ste B-406 **PH: 249-SHIP**
Austin, TX 78750 **249-7447**
(Behind Texas Roadhouse) **www.weshipanything.com**

Custom Packaging • Crating • Shipping • Copies • Mail Box Rental
 Notary • Stamps • FedEx/UPS/DHL/USPS • FAX • Packaging Supplies

Jonathon M. Martin **Champion Chevrolet - Austin**
New & Used Car Sales **11400 Research Boulevard**
 Austin, Tx 78759
 512-344-4400
 512-699-0206 Mobile
 512-345-4926 Fax
 martinj5@AutoNation.com

AFFILIATED FOOT PAIN RELIEF CENTER
DR. GARY C. PAYNE

Podiatric Physician **Laser Treatment**
Sports Medicine

Certified by American Board of Podiatric Surgery

(512)249-2253
www.austinfootpain.com
Town & Country Village Park
12833-B Research Blvd. Austin, Tx 78750

Luis Delgado **THE CRITICAL UPDATE**
Phone: 512-336-2970



- Flat Rate Technical Support for Home or Business
- Wireless Messaging Solutions
- Network Design and Consulting
- Computer Sales, upgrades and service

LuisDelgado@TheCriticalUpdate.com
Hablamos Español **http://www.TheCriticalUpdate.com**

(Continued from page 8)

Neem, or Diatomaceous Earth or other products with rotenone and pyrethrum in them that work. A good yard and garden insect killer product is the Safer brand Insect Killer Pyrethrin and Insecticidal Soap. Other chemical controls are available at your local home store or nursery. As with most products, do not apply in full sun during the heat of the day. But do it fast or cinch bugs will spread and kill large areas of the lawn.

Remember what a drought is

Austin can have days and even weeks without rain and with hot dry winds which strip the moisture from plants. Water the grass when it needs it, and the beds on a regular schedule.

Trees are not watered by most grass and bed watering.

Trees are often under-watered and recede or stop growing during a drought. If you have small or trees you need to produce more shade for the house, they will require extra watering. The most efficient way is to put soaker hoses outside of the drip line of trees and soak the area for a day every 2 weeks without rain. Landscaping costs a lot of money and replacing large trees can cost thousands of dollars so keep them watered until the fall rains return. Especially in new home areas where the roots of trees have been damaged by construction and too much dirt coverage, trees will need extra watering for several years. The TreeFolks newsletter just

reminded me that rapid growth is mostly controlled by the site quality and water applied. Fast growing trees are those that we water very deeply in the summer growing season.

Transition months in Austin are September and October that lead into the cold winter months. What that means to us who work at keeping our yards looking OK, finally our yard work is going dormant also. Not much needs to be done from now until spring unless it continues to be hot and dry. In 1999, and 2000, and 2001, we had soaking rains about the 4th of July and then the next good rain on October 22nd. There is no predicting the fall rains. If it continues to be hot and windy, be sure to spread a leaky hose or good sprinkler around the drip edges of your trees and thoroughly soak the soil.

About this time of the year I usually get several calls about trees showing stress when the hot dry winds suck the moisture out of the tree leaves. It is poor economy to skimp on water for trees especially in the summer. If they go into the winter with low reserves of water they will be weakened and may die over the winter. This is especially true of trees less than 4-6 years old without a well established root system. Soak them well at least every couple of weeks, cheap insurance.

(Continued on page 12)

They want a second chance to make a first impression.



If they could talk, they'd tell you some incredible stories. They'd tell you they need more love and affection than ever, their second time around. To learn more about how you can give one of our animals a home for life, stop by our shelter, talk with our staff, and let the animals share their stories with you.

Humane Society of Williamson County
10930 Crystal Falls Parkway
(512) 260-3602
www.hswc.net



Serving the Greater North and West Austin Metro Area including Round Rock, Cedar Park and Leander



There really is no place like home!



Services Include:

- >> In home pet sitting
- >> Daily dog walking
- >> Pet taxi
- >> House sitting
- >> Other services as requested

Ask about our Daily Dog Walking Special for the Summer

Call 512-335-4110 or visit
www.professionalpetcareofaustin.com
for more information

JULY 4TH: A GREAT DAY IN MILWOOD

On Friday morning, July 4th, over 200 Milwood children assembled at Rattan Creek Park for our annual 4th of July Parade. Led by the Jollyville Fire Department, children in strollers & wagons, kids on bikes and adults and their pets walked through our streets in celebration of this special day. After the Parade, we gathered at the park for some delicious watermelon provided by Jollyville's Pack 259. Also, a special thank you to Pond Springs Pack 159, Tom and Yvonne Jeffery's, for awarding the winners of this years decorate your wheels and dog competition!

As always, a warm and special thanks!", go to the Jollyville Fire Department, the Williamson County Police Department, and Cub Scout Packs 159 and 259 for all of their help in making this event the huge success. A special thank you is extended to our own Dallas Hall for coordinating this wonderful event.

Award Winners include:

Best Decorated Bike: Benjamin Porter (3 wheel), Brooke Odom (4 wheel)

Owner/Dog Look-a-like: Emily Hall and Angel Anna Terry and Sandy

Best Dressed Dog: Tuky, Milly Scottie, Diosa and Thelma.



Brian Kerman, RCNA President

Would You LIKE to Give Your Patio a Makeover ?



800-GLASS (4527) Serving central Texas for over 16 Years!

Residential Glass:
Shower Glass Custom Mirrors
Fogged Window Replacement
Glass Shelving & Table Tops
Automotive Glass:
Windshields, Mirrors, Door Glass
Chip Repairs / Mobile Service
Cars, Trucks, RVs, Heavy Equip.

Metro Line **930-4295**

www.russellglass.com

2611 S. Austin Ave. Georgetown TX
Glass and Screen Patio Enclosures
Pergola and insulated Patio Covers

10% Off Screen Rooms !

LIMITED TIME ...

Date Apple Cookies

- 1 cup dates
- ½ tsp. salt
- ½ cup water
- 1 tsp. vanilla
- 1 cup shredded raw apple or carrot
- ¼ cup chopped dates
- ¾ cup oil
- 3 cups rolled oats
- ½ cup chopped walnuts

- Combine dates and water in saucepan. Heat, mash and stir date mixture until smooth. Add shredded apples and oil to the date mixture and mix well. Add the rest of the ingredients and mix well.
- Let stand for 10 minutes to absorb moisture. Drop from teaspoon on cookie sheet (or roll into small balls).
- Bake 375 degrees for 20 min. or until browned.


These cookies are a favorite of my children. For me it is a guilt free treat for the whole family!

Couscous Salad

- 1 box Mediterranean Couscous
- 2 radishes sliced thinly
- 2 carrots peeled and slice thinly
- ½ cup diced cucumber
- 1 tsp. lemon juice
- Cilantro or Parsley to taste

- Cook couscous according to package directions and cool.
- In large bowl combine all the ingredients together, toss gently and serve.
- Add chicken or shrimp to make it a meal.

Do you have a **low cal or low fat recipe** that you would like to share? We would love to include those recipes as well, please send the recipe to Natasha Randall at arandall5@austin.rr.com



Hardie Siding Installation



Thinking of replacing your current siding? Consider Hardie Siding. Here's why:

- 50 Year Warranty
- Termite & Moisture Resistant
- Added value to your home

Call 633-2605

Brad Jones
 Very Competitive Prices
 Quality Workmanship
 Painting - All Repairs

*Special Pricing for
 Milwood Residents
 Save Thousands!*

**Milwood Resident 17 yrs.
 Austin Jones Enterprises, LLC.**

YARDS APART LANDSCAPE



512-970-5014

twinsett@austin.rr.com

✓ Mow, Edge, Sweep	We Will Beat Any Bid
✓ Tree Work, Hauling	by 10% and Guarantee
✓ Fertilizer, Weed Beds	Our Work!
✓ Design / Installation	Call or E-mail Troy Today!

Donald V. Jackson, D.C.
 1406 Koenig Lane
 Austin, Tx 78756
451-4006

**GO
 MAVS!**

TAKE ACTION CALL JACKSON!
<http://actionjackson.chiroweb.com>

Specializing in the treatment of

- Headache,
- Office Worker Pain Syndromes,
- Adolescence Back Pain

20 years experience
Milwood Resident

(Continued from page 9)

St. Augustine Grass Care – If it is still hot and dry and you see brown areas in hot full-sun areas, the problem is likely Chinch Bugs. They are small black insects with white markings on the wings. (So they tell me, too small for my trifocals.) A good organic cure is an insecticidal soap with pyrethrum or Neem or Diatomaceous Earth. A good yard insect killer is the Safer brand Insect Killer Pyrethrum and Insecticidal Soap. Spray not in the full-sun heat of the day on the brown areas and surrounding grass. Repeat several times a few days or waterings apart. Keep watch and repeat after a few days if the brown area is spreading.

Brown Patch Fungus: After it rains and the temperature drops to mid 70s, then dead St. Augustine grass problems are likely brown patch fungus. The stems look soft and mushy when infected by the fungus. A light application or two of Dillo Dirt or composted material will greatly reduce the fungus and allow the grass grow again. A mixture of 1 tbl. spoon of laundry detergent in a gallon water sprinkled on the area often reduces the fungus to a normal level. There are many commercial products available, be sure to read and follow the directions carefully, they can harm pets, birds and other plants.

The brown patch fungus is always in the soil and grows faster each spring and fall when the moisture and

temperature are right. The dead grass areas may need to be re-treated although composted material encourages the growth of the fungus-fighting micro-organisms and lasts the longest.

Happy Gardening,
Chuck Simms,
“The Gardening Guy”



Springwoods Girl Scouts Service Unit Will be at Rattan Fest!!!



Come to Rattan Creek Park from 10 am –Noon, on September 27th, to sign your daughter up for the wonderful world of Girl Scouts!

You will have an opportunity to see what our organization is doing in the community and how much fun our girls are having doing it! Our organization accepts girls from ages five through seventeen.

Girl Scouts builds girls of courage, confidence and character, who make the world a better place.

You can sign up at Rattan Fest or www.girlscouts-lonestar.org

We look forward to seeing you



Rotary International Project at Jollyville Elementary School



The first project was to build and establish a special garden behind the school for special needs students with physical and mental disabilities. The garden includes a turtle pond, planters and garden area for planting. Total cost of the garden, supplies and storage shed was \$9000. The second project was to purchase Bridging II TAKS Science Kits for the entire school enrollment. The kits are special prepackaged laboratory kits for a school-year's worth of experiments on plants and other scientific concepts. The cost of the kits, storage shelves and consumable materials was \$11,050.

This past spring Jollyville Elementary school was the recipient of a \$20,050 grant to develop special learning projects for students. The grant was given through the Northwest Austin Rotary Club, and included funds from the NW Austin Rotary Club, the Texas Rotary District 5870, Monterrey Obispado Rotary Club of Mexico, Mexico Rotary District 4130, and the Rotary International Foundation.

Jollyville school teachers Becky Terrell, Heather Simms, and Marilyn Bretherich were the originators of the concepts that led to the Rotary International Grant, and assisted in directing the project throughout its execution. Donna Dusek, Jollyville School Administrative Coordinator and wife of NW Austin Rotarian Ed Dusek, actively coordinated construction and materials delivery activities with suppliers for NW Austin Rotary and Monterrey Obispado Rotary to make the project go smoothly.

Volunteers from the NW Austin Rotary Club worked to establish the garden and pond, assisted by Jollyville teachers.

Local contributors also included:

Landscape Architect Russ Bragg of Austin who donated design services for the garden.

Larry Denton of Native Sun Landscaping provided landscaping materials, and donated the bird bath.

Aric Belota of Bobcat of Austin donated Bobcat Skid-Steer Loader for excavation and material transport during garden construction.

Eagle Scout Candidate Nick Arcuri provided labor and purchased materials to install walkways and other features to the Special Garden.

The science kits were put into use in the Fall of 2007, and the special garden was completed at the end of the school year, May, 2008.

Milwood's VERY OWN
Home Sweet Home
PET SITTING SERVICES

- locally owned and operated
- OVER 8 YEARS VET CARE EXPERIENCE
- 10% off Milwood resident discount
- \$10.00 off for first time customers *
- In-home care for dogs, cats and small pets
- Mid-day potty breaks



799-3767
APRIL@AUSTINPETNANNY.COM
WWW.AUSTINPETNANNY.COM

* PLEASE SEE WEBSITE FOR RESTRICTIONS

2008 Summer Pool Schedule

August 2008

August 1-25:

Open Swim: 9:00am - 9:00pm

Sat: Open Swim: 9:00 am - 9:00pm

Sun: Open Swim: Noon - 9:00pm



August 26th: School Starts

August 26-31:

Open Swim:

Monday-Friday: 4:30 - 9:00pm

Mon, Wed, Fri :Noon-1:30 pm

Sat: Open Swim: 11:00am - 9:00pm

Sun: Open Swim: noon - 9:00pm

Teen Nights: Aug 7 & 21: 8:00 pm—10:30pm

\$2.00 Cover Charge

September 2008

Sept 1 - Labor Day: 11:00am - 9:00pm

September 2-15:

Open Swim:

Monday-Friday 4:30-9:00pm

M,W,F Noon-1:30 pm

Sat: Open swim: 11:00am - 8:00pm

Sun: Open Swim: noon - 8:00am

Winter Season begins: September 16.

September 16-30:

Open Swim:

Mon, Wed, Fri: noon - 1:30pm

4:30 - 8:00pm

SUBJECT TO CHANGE. TO VERIFY HOURS, PLEASE CALL 257-8175(Pool).

Notes: See other pages for membership application for pool use. Applications MUST be submitted by mail or in person at Southwest Water Company (formerly know as ECO Resources, Inc) NAM1 Pool Tags - 9511 Ranch Road 620 North Austin, Tx 78726.

**Rattan Creek Pool is Managed by
Clearwater Management
Phone - 331-7066**

**Pool Manager: Mandy Paul
Pool Number: 257-8175**



Dr. Kyleen Chen



Dr. Samir Gupta

KC DENTAL

Family Dentistry
Children Welcome!

WHITENING SPECIAL!

ZOOM or equivalent in-house bleaching

Includes "Take Home" customized trays

\$275 special (regular \$399..ends 9/30/08)

Some limitations may apply

918-0888

*Please call to schedule
an appointment !*

6301 W. Parmer Lane, #606, Austin, TX 78729

Corner of McNeil & Parmer, behind Starbucks, next to Schlotzsky's

RATTAN CREEK NEIGHBORHOOD NEWS

Rattan Creek Park, Pool and Court Rules and Regulations

Rules are established and adopted by the North Austin Municipal Utility District #1 Board of Directors
Pool Identification tags and tennis court keys must be purchased through the District Manager
Southwest Water Company 9511 RR 620 N, Austin, Texas 78726-2908

Pool Rules and Regulations

Identification

1. Pool is available to District residents who have paid tag fees and their guests. Out of District memberships are available. Only individuals with tags may enter pool area.
2. Identification tags must be worn by swimmers at all times.
3. Report lost or stolen I.D. tags to the pool manager. Replacement tags can be purchased through ECO Resources for a \$10.00 fee.
4. Use of pool I.D. tags by any one other than the swimmer listed on the current year's registration form will lead to forfeiture of that I.D.

General Requirements and Conduct

1. Conduct by any person deemed to be dangerous, unwarranted, or offensive is grounds for discipline by the lifeguards. Offensive behavior in particular, will be dealt with on an individual basis and could result in suspension from the pool. Any individual suspended three times may also lose all pool privileges for the season.
2. Running, jumping, skipping, or any activity other than ordinary walking in the pool area is strictly prohibited.
3. Bicycles and skateboards must be walked in front of the pool entrance for safety. No pets are allowed in the fenced pool area.
4. Pool may close for ten (10) minutes each hour as a safety precaution
5. Floating devices are not allowed in the pool. Water wings or swim rings for non-swimming children may be used if accompanied by parent or approved baby-sitter.
6. Glass containers of any type are not allowed inside the fenced area or in the bath house area.
7. No cutoffs or street clothes are allowed in the pool.
8. Only lifeguards are to be on the lifeguard stands.
9. No person shall talk to, shout at, or in any manner distract a lifeguard while on the lifeguard stand except in the case of an emergency.
10. Only masks approved by the Pool Manager will be allowed in the pool.
11. One lane will normally be designated for lap swimming at all times, additional lanes may be added at the discretion of the Pool Manager.
12. No smoking or alcoholic beverages are allowed in the fenced pool area.
13. Coaching activities, other than by parent/guardian, are prohibited except as provided by Pool Manager, McNeil High School or the Hurricane Swim Team.
14. Parents must be within arms reach of non-swimming children at all times.

Adult Supervision

1. Children under ten (10) years of age must be accompanied by a parent/guardian or authorized baby-sitter at all times while inside the fenced pool area, unless approved by Pool Manager.
2. Parents are required to provide written authorization naming a specific approved baby-sitter to attend their children under 10 years old at the pool. The baby-sitter must be fourteen (14) years of age or older and be a pool member or have a valid guest pass.
3. Parents must be within arms reach of non-swimming children at all times.

Guest Policy

1. Guest(s) must be accompanied by a registered pool member and submit a valid guest pass for admission. Pool members must accept responsibility for their guests.
2. Guest(s) must register with the gate keeper upon admission to the pool facility and sign a waiver of liability.

Private Parties

1. Adults eighteen (18) years and older holding a pool I.D. may make reservations to use the pool for a private party when the pool is not open for regular operating hours. All parties must terminate (all participants departing the facility) by 11:30 p.m.
2. Reservations must be made at least four (4) days in advance with the Pool Manager. Reservations are confirmed by a \$50.00 deposit. A reservation is not confirmed until the Pool Manager receives the deposit. The cost for rental of the pool is \$10.00 per hour plus lifeguard fees.
3. Persons responsible for any parties must hire lifeguards. Lifeguards must be those guards that are under contract with the District.
4. Any damages resulting from a private party will be the responsibility of the lessee.

Wading Pool

1. Children taller than a height set by the Pool Manager will not be allowed in the wading pool.
2. Lifeguards will not monitor the wading pool. Children in the wading pool must have a parent or baby-sitter present at all times.

General Information

1. At the discretion of the Pool Manager and as approved by the District Manager, certain periods of the normal open hours may be set aside for specialized activities such as, adults only swim, swim lessons, swim meets, and other special events.
2. Hours may be shortened before and after school starts, and during swim team season. Check the Pool Bulletin Board for scheduled events and scheduling changes.

Tennis Court Rules:(In District Members Only)

Tennis Court Hours 7:00 am – 10:00 pm.

1. By entering the court for play, you are acknowledging that you have read and agree to abide by these rules.
2. Tennis courts for tennis play only. No Soccer tennis.
3. No glass containers or alcoholic beverages permitted on the courts.
4. No pets, bicycles, skateboards, or motorized vehicles allowed on courts.
5. No dangerous or offensive conduct or offensive language will be allowed.
6. Proper tennis attire must be worn at all times. Shirts will be required at all times.
7. No tennis lessons allowed after 6:00 pm weekdays or anytime on weekends.
8. Gate should be closed and locked at all times.
9. A maximum of (4) players are allowed per tennis court at any time.
10. Application and fee for court keys **MUST** be paid at ECO Resources (separate from water bill). Keys are not available for pick up. Keys will be mailed weekly. Only one key per household will be issued. Absolutely no applications or fees will be taken at pool.
11. All household members using the courts will need to obtain a tag at the pool. Members should keep tags with them at all times when playing. Members can be required to show tags at anytime.
12. All tennis court reservations will be made by registered tennis members through the online tennis reservation system. Tennis court reservations may be made one week at a time, and not more than 7 days in advance.
13. A maximum of 2 hours per reservation and one reservation per member per day, with a maximum of 4 reservations per week, may be made through the online tennis reservation system. Court reservations can be made up to 7 days in advance of play. Once you have scheduled 4 reservations, the scheduler will not allow you to make another until 7 days from the day you made your first reservation.
14. Reservations must be made at least 1 day in advance of playing in order to be guaranteed. If open times are available then walk on play is permitted.
15. Members have 15 minutes to make their reservation before the court will be declared open.
16. Walk-on players are not guaranteed continued court availability, if a person shows up with proof of their reserved time, but not 15 minutes late, the walk-on players must give up the court immediately to the reserved party.
17. A member may have maximum of 3 guests at one time on the court. A member must be present on court with their guests.
18. Special tennis activities such as league play and park tennis socials will be scheduled through Southwest Water Company. Scheduling for these events will not be available online.

** An email address is mandatory to be established with the online reservation system. All reservations will be scheduled by registered members.*

Absolutely, NO reservations will be made by phone.

Rattan Creek Park is a private park and the tennis courts of Rattan Creek Park are for the use of residents of North Austin MUD #1 and their guests. The resident must be present at all times when court is in use.

Violators are subject to removal, privileges revoked and possible prosecution.

By order of North Austin MUD #1.

All rules will be enforced by general manager of the district or his designee. District Manager:

Southwest Water Company 335-7580

Sport Court Rules:

Court Hours: 7:00 AM – 10:00 PM

No glass containers.

1. No alcoholic beverages inside court area.
2. No pets, bicycles, skateboards, skates or motorized vehicles are allowed on the courts.
4. No dangerous or offensive conduct or offensive language will be allowed.
5. Time limit of 60 minutes is observed when others are waiting.

The resident must be present at all times when the court is in use.

Rules For Use of District's Parks /Greenbelts

- 1) Curfew for the District's Parks and Greenbelts shall be 10:00pm to 6:00am, other than pavilions, sports courts and tennis courts, which shall have a curfew of 10:00pm to 7:00am.
- 2) No destructive activities shall be permitted in the District's Parks. The discharge of firearms, pellet guns, air soft guns, paint ball guns, bows and arrows, sling shots and other hazardous items shall be prohibited.
- 3) Golfing within the District's Parks and Greenbelts shall be prohibited.
- 4) Disorderly conduct and offensive language shall not be permitted in the District's Parks and Greenbelts.
- 5) Motor driven vehicles and equipment are not allowed in the District's Parks and Greenbelts, except as authorized by the District.
- 6) Children under the age of eighteen shall not be permitted to smoke within the District's Parks and Greenbelts.
- 7) No glass containers shall be permitted in the District's Parks and Greenbelts.
- 8) No alcoholic beverages shall be permitted in the District's Parks and Greenbelts without prior District approval
- 9) All pets must be on leash and under the physical control and restraint by their owners at all times in all parks and greenbelts. Droppings must be removed by the owner.
- 10) No amplified music will be permitted in the District's Parks and Greenbelts without specific, prior Board authorization.
- 11) The District reserves the right to change or impose additional restrictions on use as situations warrant.

NORTH AUSTIN MUNICIPAL UTILITY DISTRICT NO. 1 - RATTAN CREEK PARK POOL & TENNIS COURTS

Application to Use Recreational Facilities and Release of Liability

**PLEASE READ ALL INSTRUCTIONS BEFORE COMPLETING – INCOMPLETE APPLICATIONS WILL BE RETURNED
APPLICATION FOR 2008 WINTER SESSION**

NAMUD #1 Water Bill Account No. _____ Home Telephone No. _____
 (Application will be considered incomplete without account number)

Name _____
 (As it appears on NAM1 bill)

Address _____ ZIP _____

Emergency Contact Name _____ Emergency Phone No _____

I have made application for use of the District’s recreational facilities on behalf of myself and the listed members of my family and our guests. I understand that the District’s recreational facilities are for use of authorized persons only, and agree that all use by me, my family and our guests shall be in accordance with the District’s “Rattan Creek Park Pool, Court Rules and Regulations.” I agree that the District does not, by the providing of recreational facilities, assume any responsibility or liability to our guests or us. We assume all responsibility for, and waive any claim against the District for accidental injury, property damage or death arising out of the use of these facilities by any of our guests or us. We agree to indemnify and hold harmless the District, its directors, agents, employees and consultants whether paid or volunteer, from any and all claims by us or our guests which may arise out of use of the District’s recreational facilities. If this application is on behalf of any minor children, the application represents that the applicant is the legal guardian of said children and fully responsible for such children, and authorized to execute this application and release on their behalf. I understand that the children, if under ten (10) years of age, must be accompanied by a person fourteen (14) years of age or older when using the District’s facilities. *I further understand that I am responsible for any damage to District facilities caused by my family, my guests or myself.*

Applicant Signature: _____ Date: ____/____/____
 (APPLICATION WILL BE CONSIDERED INCOMPLETE WITHOUT SIGNATURE)

If you are applying for a tennis key/membership, YOU MUST SUPPLY AN EMAIL ADDRESS IN ORDER TO BE ESTABLISHED IN THE ONLINE RESERVATION SYSTEM. Please PRINT CLEARLY below:

(See tennis rules for more info)

Email: _____

Household Members Attending Pool: All members receiving badges must be listed below. (Badges required for ages 3 and up)

<u>Member Name</u>	<u>Date of Birth</u>	<u>Member Name</u>	<u>Date of Birth</u>
_____	____/____/____	_____	____/____/____
_____	____/____/____	_____	____/____/____
_____	____/____/____	_____	____/____/____
_____	____/____/____	_____	____/____/____

REGISTRATION FORMS MUST BE SUBMITTED TO Southwest Water Company

**Make Checks Payable To North Austin M.U.D. #1 Pool
 Check MUST accompany this registration form to be processed.**

CHECK MUST BE SEPARATE FROM WATER BILL PAYMENT DO NOT MAIL APPLICATION W/ WATER BILL

ALL ITEMS PURCHASED ARE NON REFUNDABLE

2008 Winter Fees:

Quantity			
_____	Winter In-District Badge	@ \$20 per badge	\$ _____
_____	Out-of-District Winter Membership (Up to 4 Badges if needed)	@ \$200 per household	\$ _____
_____	Additional Out-of-District Winter Badge	@ \$50 each additional badge	\$ _____
_____	Winter Guest Admittance (only w/ badge purchase)	@ \$2 each (one time use)	\$ _____
_____	10 Winter Guest Admittances (only w/ badge purchase)	@ \$15	\$ _____
_____	Tennis Court Key (In-District Only) (KEY IS ONLY VALID THROUGH APRIL 2009) (KEYS WILL BE MAILED WEEKLY – TAGS TO BE OBTAINED AT THE POOL)	@ \$25 (ONE KEY PER HOUSEHOLD)	\$ _____
_____	RCNA Membership (In-District Only) (RCNA Fee Covers Jan-Dec Membership Year)	@ \$25 per household	\$ _____
WINTER BADGES/GUEST ADMITTANCES VALID THRU 04/30/09			Total \$ _____

PLEASE READ ALL INFORMATION CAREFULLY BEFORE COMPLETING APPLICATION

- All members receiving ID badges must be listed, with birthdates, for the application to be considered complete. (Children under three attending the pool do not need to be listed.)
- Guest admittances can only be purchased by a member of the pool. All guests must be accompanied by a pool member.
- Three guest admittances will be assigned with each Summer or Winter ID badge purchased. Six admittances will be assigned with each Annual ID badge. (Complimentary admittances are not issued with ID badges purchased for replacement of a lost or stolen badge.)
- A check made payable to North Austin M.U.D. #1 (NAM1) Pool must accompany the application to be processed.
- A check for pool ID badges, tennis key and/or RCNA **must be mailed separately** from the payment for the NAM1 water bill.
- Replacement fees for lost or stolen ID badges are as follows:
Summer / Winter Badge: \$5.00 each Annual Badge: \$10.00 each
- If purchasing a combination of summer only/winter only & annual ID badges, please specify for whom the annual ID badges are to be assigned to, as each ID badge can only be assigned to & used by **one** person.
- Annual ID badges are good from the beginning of the summer session until the end of the winter session & not necessarily a year from the date of purchase. (i.e. valid from May 2005 to April 2006)
- Tennis court locks are changed every 6 months – around the end of April/1st of May & end of October/1st of November. Therefore, for continued access, keys will need to be purchased twice a year. **Only ONE key can be issued per household.** Replacement fee for lost or stolen keys will be at the same price of a new key.
- **Tennis court keys are not available for pick up** at Southwest Water Company & will be mailed to you (even if your application is brought in person). Tennis court keys are not available at the pool.
- ID Badges, guest passes & tennis court keys are not pro-rated at any time.
- Guest passes can only be used for the session they were issued in & cannot be “carried over” to any other session.
- Please make sure you are filling out the appropriate application for the ID badges, etc., that you are requesting, so that you are referencing the correct information, fees, etc. (The year & session being registered for will be stated above the list of fees.)
- If your child will be three years of age *PRIOR to opening day* of the session being registered for (even if they are not yet 3 at the time of registration), he/she WILL need an ID badge purchased for him/her.
- Only ID badges will be available at the pool. All applications & payments must be submitted by mail or in person to Southwest Water Company.
- ID badges will be issued to members at the pool after your application is processed by Southwest Water Company. **ID badges are not mailed.** You will receive a letter via mail notifying you that your application has been processed; however, once you are on the member list submitted to the pool (weekly), you may pick up your badge.
- Forms of payment accepted for pool & tennis keys are check, cash & money order. Credit/debit cards are not accepted for payment.
- In the event a check is returned by your bank, your water account will be posted with the fees for items purchased, plus a returned check fee.

All applications MUST be signed to be considered complete.

Application, schedules & other information on district facilities is available on the district’s website (www.northaustinmud1.org).

ALL INCOMPLETE OR INCORRECT APPLICATIONS WILL BE RETURNED WITHOUT PROCESSING



Danskin



I have been asked a number of times, "What is the Danskin?". That is a good question. The Danskin is an all women's triathlon. Swimming is half a mile, the bike ride twelve miles and the run three miles. Proceeds go towards women's cancer research. But then, I have to say, it is so much more. Mush more for many women.

I train with a group of forty-five women through the YMCA on McNeil Rd. The program is called the Y-Tri. We train for eight weeks. We sweat, hurt and push ourselves for one event, the Danskin. We return year after year to improve times, friendships and do what a lot of people will never do...a triathlon just for women. It is a big accomplishment.

Some of us are there to better our times. Some of us are there because we need something to keep us honest in keeping active. Some of us don't really know why we are there, we just are. There are those that want the ultimate time and those that just want to finish the race.

I started this trek two years ago. A friend told me how much fun she had training and participating in the Danskin. She made it sound like a party. It took a year and twenty pounds, but I was ready to start training in 07'. I was sooooo wrong. It was hard, I complained a lot and I told my friend, the fun was hiding! I couldn't find it anywhere.... I went back the next year feeling more confident. Training went great but this time, I gave my sisters the "it's fun" speech and they joined me. Guess

what, I found the fun. I loved the Danskin this year. The training, the returning friends and my sisters made long lasting memories.

The RCNA helped sponsor a dinner the YMCA coaches through. There was a slide show, great food and lots of laughs. Our families were invited and got to see what we had been doing the past eight weeks. While at the dinner, our Coach, Evalyn, told the room the RCNA had made a monetary donation and had a show of hands of those who lived in Milwood. There were many- many hands that went into the air. We would like to thank the RCNA for donating to our program and for putting so much faith in our program and our Danskin women of Milwood.

Well, training is over, for the Danskin. All those women you saw running, biking and swimming so early in the mornings, are not in every nook and cranny. You will see us around, in our new white Danskin shirts. Sporting them like a badge of honor.

Next year, join us. One of our ladies is starting a bike club in Milwood. All levels are welcomed. You will see others of us in the pool or running on the streets. Ask us how to get started. We would love to share our experiences and stories of why we do the Danskin.

Congratulations to all those Milwood Danskin Women. You are Phenomenal.

A resident of Milwood and RCNA member

FENCE MAN **FREE ESTIMATES**

Cheap Prices
Great Work

512-689-1303

Proud Millwood Resident



MUD News

North Austin Municipal Utility District #1 Board of Directors notes on the June 2008 Board meeting on Commercial Development, Parks, and Pool activities: *Note that the Board reviewed and approved minutes of meetings are available on the NAMUD#1 web site listed below.*

Our contractor for inspections of restrictive Covenant Violations: The PBF Covenant Management, LLC reported on June 27, 2008:

New complaints received (24), Calls for advice (2), Emails for advice(3), First letters sent (15), Number of cover letters to rental owners: (2), Second letters sent (1), Repeat letters sent (0), Violations sent to MUD attorney (1), Number of cases closed (violations corrected) (20), Number of cases in litigation(2).

Rattan Creek Park Pool:

- The pool is open and operating. The new pool bathrooms have also just recently been opened.
- Deep end of the pool is open again.
- Diving board has been installed and is operational.

Rattan Creek Park Community Center: The Community Center and Pool Building construction is nearing completion. A grand opening will be scheduled for September. Watch the website for more information.

The Park Parking lot will be closed and resurfaced and restriped before the opening of the building.

If you are a tennis player and your ball happens to get hit into the construction area for safety:
DO NOT GO IN AFTER YOUR BALL!

New Sheriff Substation to open in Rattan Creek Community Center. This will mean an increase in Williamson County Sheriff presence in the district.

Rattan Creek Trail: parts of the trail near the

construction area will be repaired upon the completion of the community center project.

New Williamson County Trail Project: No new progress at this time.

The soccer fields: have opened again. Thank you for observing the closure of the fields.

North Austin Storm Water Quality Coalition: We are in the first year of our five year storm water management plan. Implementation of our plan has begun as required by the EPA and TCEQ. An Eagle scout project was completed which marked the water inlets and outlets.

Memorial Bench: The board approved the placement of a memorial bench for Cpl Chad Oligschlaeger, in Rattan Creek Park, near the Kerrville Folkway entrance to the trail.

Note that these are unofficial notes about the Board activities. After Board approval at the next meeting the official minutes of the meetings are posted on the web site.

Jo Jones, Secretary,
NAMUD #1 Board of Directors.

Website: www.northaustinmud1.org

Deed Restriction Violations:

- Be sure to include the address in question, nature of your concern and your name and address.
- Deed restriction violations must be submitted in writing to:

PBF Covenant Management, L.L.C.
202 Walton Way, Suite 192
Box 142
Cedar Park, TX 78613-7046

Irrigation Sprinklers need to be reset for needed watering.

The good news is we now have higher water pressure and always the same pressure at your house. As you may remember, the City of Austin Water department provided water pressure that changed on a 2-3 day cycle depending on the height of the water in the large reservoir tank on North MOPAC on Miller Hill. They drain the tank down and then pump it up to almost full to refresh the water in the tank every 2-3 days. And our water pressure varied by the level of the water in the tank.

My house on Rattan Creek greenbelt had 55 pounds per square inch pressure give or take 20 psi (that's 20/55 = 36 % change)! . Now in NAMUD#1 with our new 2 pressure pump locations of 2 pumps each, my pressure is always 75 psi.

Irrigation Controllers need to be re-timed or reset:

Due to the varying pressure in the past, and lower pressure at times: 1. I set my controller for a flow time that would provide 1 inch of water to each area in the yard. 2. I set a second watering per week for just the full sun areas where more water is needed to provide good healthy St. Augustine grass and flower beds, etc.

Did I measure the 1 inch of watering at a time of low pressure or higher pressure? Who knows, and I adjusted the time in the summer for a bit longer in the areas that were showing stress in the full sun.

How to re-set the Controller times? Well, now we all (on an average) have + 20 psi and the pressure is always the

same at your house. So whatever watering time you used, you are now getting about 20 psi more water and you are wasting water and money.

What to do: reduce your time setting times by 1/5 or about 20 %. This will get you back to the correct water coverage to keep the grass and plants and trees alive during high heat and stress times. For example, if you watered a section for 30 minutes before, reduce that time (1/5 of 30 minutes = 6 minutes) to 24 minutes for the same amount of water on your plants in that section. See the Gardening article in this newsletter about setting up sprinkler systems time.

Note that the COA now requires sprinkling in night time hours (1 to 6 am is great) see their web site of watering times: <http://www.ci.austin.tx.us/watercon/downloads/commirrsticker.pdf> . See their web site for additional rebate information (Rain Barrels, Toilets, etc) (NAMUD#1 purchases water wholesale from COA, so we are allowed rebates, etc.) See rebate information at:

<http://www.ci.austin.tx.us/watercon/> . After the Community Center is open, or before if you are interested, we can hold a discussion group about watering and Irrigation Controller settings etc. Let me know if you are interested by e-mail (With your street address name, and e-mail address and convenient time to meet) at charlesvsi@aol.com, and we can set up a time.

Chuck Simms, The Gardening Guy.



SouthWest Water Company™
With Water Comes Responsibility

Providing North Austin MUD No. 1 with

- full water & wastewater utility management services
- parks & pool management
- utility maintenance
- accounting
- billing & collections

877.405.1750
 General Manager
 Gary Spocorts

9511 Ranch Road 620 North, Austin, TX 78726
 Mailing address: P.O. Box 2647, Cedar Park, TX 78726



NA MUD #1 Board of Directors:

Place One - **Keith Collins,** 258-6244
 Treasurer (5/12)
kcollins@northaustinmud1.org

Place Two - **Don Conklin,** 331-1903
 Vice President (5/10)
dconklin@northaustinmud1.org

Place Three - **Jo Jones,** 335-1805
 Secretary(5/12)
jrjones@northaustinmud1.org

Place Four - **Alan McNeil,** 219-8719
 President (5/10)
amcneil@northaustinmud1.org

Place Five - **John Lenz,**
 Ass't Treasurer/Secretary (5/12)
jlenz@northaustinmud1.org

Website: www.northaustinmud1.org

IMPORTANT NUMBERS

Ambulance 9 - 1 - 1

Fire: Jollyville Fire Department
Emergency 9 - 1 - 1
 Administrative 258-1038

Sheriff: Emergency 9 - 1 - 1
 Williamson County
Non-Emergency 943-1389
 Travis County
 Non-Emergency 974-0845

Crime Stoppers 1-800-253-STOP

County Commissioner
 Williamson, Precinct 1
 Lisa Birkman 733-5380
 Travis, Precinct 2 854-9222

Dept of Homeland Security 1-800-BEREADY

Poison Control 1-800-POISON 1
 (1-800-764-7661)

Mail: Balcones Post Office
 11900 Jollyville Rd. 331-9802

Schools: RRISD 464-5000

Elementary:
 Jollyville 428-2200
 Pond Spring 464-4200
 Live Oak 428-3800

Middle School:
 Deer Park 464-6600

High School:
 McNeil 464-6300

Utilities:

Electric:
 City of Austin 494-9400

Gas:
 Texas Gas Service 1-800-700-2443

Water/Wastewater: NA MUD #1:
 SWWC 1-877-405-1750

Phone: SBC 1-800-464-7928

Trash/Recycling/Large Item Pickup:
 Round Refuse 255-4980

Before U Dig: (call 48 hrs before you dig)
 Texas One Call 1-800-545-6005

**Join us Sunday mornings
 for worship @ 10:45am**

**CrossRoads is currently
 meeting @**

**River Oaks Elementary
 12401 Scofield Farms Dr.
 Austin, TX 78758**

www.CrossRoadsChurchAustin.com

phone:: 512.491.0496 | fax:: 512.331.8063 | P.O. Box 270122 Austin, TX 78727



CROSSROADS
 COMMUNITY CHURCH





Mazdas to fit everyone's lifestyle.



Roger Beasley's Premier MAZDA

Central Texas' premier Mazda dealership.
Sales and service beyond
your expectations!



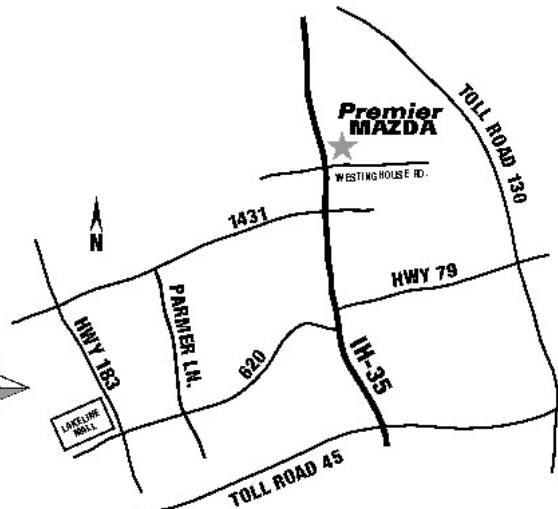
Take a test drive today.

Conveniently located at:
IH-35 NORTH @ WESTINGHOUSE ROAD
EXIT 257, ONE MILE NORTH OF ROUND ROCK

(512) 930-1314

www.premiermazda.net

SALES: M-SAT 8:30AM-8PM SERVICE: M-F 7AM-6PM



We Can Use Some Respite
By Williamson County Commissioner Lisa Birkman, Precinct One

Last summer, I spent a day with Sgt. Mike Sorenson of the county's Crisis Intervention Team (CIT). One of the calls was very memorable. We arrived at a local hospital to see a young woman, who was in the ER as she had taken an overdose. She could not remember if she had intentionally taken the pills or just taken too many due to the alcohol in her system. Either way, she nearly died, but luckily a neighbor stopped by, found her unconscious and called the paramedics, who were able to save her. Unfortunately, this was not her first suicide attempt, but on this occasion, CIT was called in to help decide if she was still a danger to herself and if so, transport her to the local state operated inpatient mental health facility, Austin State Hospital, which is universally referred to as ASH. The young lady had been to ASH before and, understandably, did not want to go again. An important factor as to whether she could go home right away related to any support system she would have. As it turned out, she had none. She lived alone and had no family

nearby. So, she was taken to ASH after all, in order for her to have some time to stabilize before going home alone again. But, like many crisis mental health calls, in my view, this patient fell into a gray area. If the CIT deputy would have had another reasonable choice of a place for the patient to go, she might have avoided a costly stay in ASH.

In order to address mental health issues such as the ones of this troubled woman, the Williamson County Mental Health Task Force, of which I am a member along with many other community leaders, in partnership with Bluebonnet Trails MHMR and all the local hospitals have teamed up with the state to fund and operate the county's first mental health respite center. I looked up "respite" and it means "an interval of rest or relief." This respite facility will provide that interval of rest for otherwise healthy adults with mental illness. It will be a temporary home for up to ten residents

(Continued on page 25)



COUNTY COMMISSIONER PCT. 1

WWW.LISABIRKMAN.COM

Paid Pol. Ad.-Birkman Campaign, POB 1831, RR, TX 78680

(Continued from page 24)

who go there voluntarily and do not have a history of violent crime.

Eligibility will be determined by trained MH professionals from Bluebonnet and patients will stay there for an average of three to seven days. Other task force members and I visited several of these facilities in other counties when we were trying to determine if the respite home idea was one we thought would be helpful here. We concluded that it would be a great addition to our mental health crisis intervention system.

Bluebonnet was able to get a grant from the state to fund the first year or so of the facility and the local hospitals agreed to put in the matching funds. The total cost will be about \$700,000, not including all the services which will be brought in by

Bluebonnet, such as psychiatrists, social workers and so forth. A private company will most likely be hired to run the facility. We hope to find a location and open the facility in the next few months. Kudos to all that have worked to make this respite center a reality and to improve the lives of the thousands of county residents and their families who struggle daily with mental illness.

This facility will be another resource, along with the trained deputies and counselors of the county's CIT and Mobile Outreach Team, who respond throughout the county when called into crisis situations. If you or a loved one are in need of services, you can call the mental health hotline at 1-800-841-1255.

You can reach me at lbirkman@wilco.org or 733-5380.

Lisa Birkman,

Williamson County Commissioner Precinct 1

VP Salon & Gifts
Full Service Salon, Spa & Gift Shop

- Hair Specialist & Color Artist
- Complete Skin Care & Treatments (Massage/Facial/Waxing/Tanning)
- Gift Certificates Available

20% OFF: All Service

SERVING MILWOOD'S BUYER'S & SELLERS
for OVER 10 YEARS!

* Sellers * Buyers * Leasing * Investments

As a proud Milwood resident, I am pleased to offer the "Power of RE/MAX" to all of my neighbors and friends!

Call me today for a FREE Broker's Price Opinion on your home

Brian Kerman, REALTOR
RE/MAX Austin Advantage

Direct: 512 921-4490 Office: 512 219-3030

brian@austin-real-estate.com

www.milwood-homes.com



RCNA Board Member

Donation made to RCNA Scholarship Fund from every Milwood sale!



Architectural Control Committee:

Be sure to include the following information along with the proper forms on you submissions

1. Legal description of property
2. Description of work to be performed
3. Drawing of work to be performed
4. Description of materials to be used
5. Copy of survey (to insure proposed changes will not encroach in any recorded easements)

Once submitted, the ACC has 30 days to respond with approval, denial or request additional information.

RCNA-ACC Action Report 01/18/08 to 03/31/08 :

Inquiries for information: 3

Projects submitted for ACC Review:

- #3 Backyard play equipment: 0 inquiry.
- #4 Deck and Arbor: 0 inquiry
- #5 Fences, replacement and relocation: 0 inquiries
- #6 Remodeling / Additions: 2 inquiry
- #7 Storage Sheds: 0 inquiries,
- #8 Swimming Pools: 1 inquiry 1 request for Approval

Chuck Simms,
RCNA Architectural Control Committee Chair
E-mail: RCNAACCVS@aol.com

Architectural Control Committee Information:

Any submissions for ACC approval will need to be sent to:

Note the Change in Address!

RCNA –ACC

13359 N Hwy 183, Ste B-406 PMB # 237

Austin, TX 78750

(PAK MAIL business is behind the Texas Roadhouse, in the strip mall at the corner of Anderson Mill Road and Hwy 183 access road.)

Or contact Chuck Simms for more information needed via email: RCNAACCVS@aol.com .

If you need copies of your Deed Restrictions:

You can contact Pat Franzen at

PBF Covenant Management, L.L.C.

202 Walton Way, Ste 192, Box 142

Cedar Park, Tx 78613-7046

- There is an \$ 8.50 charge for the copies. Once you have paid for the copies, a set will be mailed to you.
- You will need your legal description (ie. lot, block, and section of Milwood), so you get the correct set of deed restrictions for your section.

POSTALANNEX⁺

Your Home Office[®]

- | | | |
|--------------------|----------------------|-----------------|
| Shipping | Mailbox Rentals | Passport Photos |
| Packaging Supplies | Black & White Copies | Office Supplies |
| Jumbo Shipping | Color Copies | Greeting Cards |
| Notary | Laminating | Faxing Services |
| Boxes of All Sizes | Binding | Key Cutting |



Owned & Operated by Neighborhood Mom
Proud Sponsor of the Pond Springs PTA!

M-F: 8am-7pm
Sat: 9am-4:30pm

6001 W. Parmer Ln.
In the HEB Center @ McNeil & Parmer
Call 331-5855 • Fax 331-9357
www.postalannex.com/7012

110 N. IH-35 & RR 620
In the Old Albertson's Center Next to Starbucks
Call 828-4549 • Fax 828-4580
www.postalannex.com/453

Email us your copy job & we'll have it ready for you!

postalannex.roundrock@sbcglobal.net

POSTALANNEX⁺

\$ 3 00 OFF

Shipping with FedEx or UPS

Offers cannot be combined. Expires 10/31/08.

POSTALANNEX⁺

FREE

500 Business Cards

with purchase of 500 business cards. Some restrictions apply.

Offers cannot be combined. Expires 11/31/08.

CLASSIFIEDS

Classified Ad rates are 25¢ per word, per issue. Deadline for ads is the first of each month for the following month/issue. **Payment in full is required before publication.** Any ads received after the deadline, will be held until the next issues publication.

No exceptions will be made. Send to:

RCNA, c/o Kelly Buczek (ph: 258-6482)

6407 Crowley Trail Austin, Tx 78729

or email: kelly@catscradle.us

LOW COST SIDING AND PAINTING – Reasonable and reliable. Over 300 homes painted in Milwood. Milwood resident; 17 years. 512-633-2605 (1/09)

Come Play with Clay!!! Build, throw, slip-cast and paint your pottery at Ek Creations. Milwood location offering monthly classes. Contact Carla at 797-6580 or check website www.ekcreations.net for details. (3/09)

I will buy your house in Rattan Creek 750-3707 (3/09)

HEALTH, ENERGY, LONGEVITY, WEIGHT LOSS - Discover the health benefits of the worlds #1 Superfood. Try it for free. Call Pam 512-514-0815 www.mymonavie.com/shopacaiberry (11/08)

Certified Math Tutor - Twenty-five years math teaching experience (17 classroom, 8 tutoring). Conveniently located (near Parmer & McNeil). Will tutor Elementary, Junior High, and High School Math (through AP Algebra II). Exceptional success rate, especially with students who have a history of not doing well in math or just don't like math. Recommend meeting twice a week for an hour, but can modify as necessary to meet needs. Compensation: \$35 per hour Please call **Beth Frick at 258-7043** for references or more information (11/08)

Frank's Painting – Summer Time Special! Interior * Exterior * Apartments * Houses * Free Estimate * 25 Years Experience * Friendly, Honest & Reliable 965-0336 (3/09)

TEEN SERVICES

ATTENTION TEENS: YOUR ADS RUN FREE, but must be renewed once every 6 months.

The date at the end of your ad indicates the last month your ad will run. All ads must be submitted in writing and mailed or delivered to:

RCNA c/o Kelly Buczek

6407 Crowley Trail Austin, Tx 78729

or email: kelly@catscradle.us

Melanie Bivone, 15 - I have grown up taking care of children in my moms daycare. I can babysit all ages from two weeks and older. I can cook for them, play games with them, and get them to bed on time. With my compassionate heart, I also love animals. I will walk them, feed them, and love them as my own. Please call me anytime on my home phone at 331-5240 or on my cell phone at 297-0705 (7/08)

Austin Crocker, 13 – Lawn Mowing service. 2 years experience. Have own mower and weed eater. Located on Shiner street but will travel anywhere in Milwood. Prices start at \$20 for a small yard. Phone 584-1580 for an estimate or to have work done. Please leave message. I will respond ASAP.(11/08)

Matthew Chaltain, 15 – Lawn care: will do all lawn care, including mowing and weed - wacking, Starting at \$20. Call 512-983-3322 or email MChaltain@austin.rr.com (11/08)

Brian George, 14 - I have much experience in mowing lawns, edging, and weeding. I enjoy working for people, and helping them make their lawn(s) look clean, and cut. My rate is cheap and fair. I clean up after myself. If you'd like your lawn looking better than it already is, I'd be more than happy to help! Please call me on my cell phone at (512) 826-7645.(01/09)

Rattan Fest - September 27, 2008

No Rain Date

Seventeenth Annual Rattan Fest

Don't miss the fun!



Come See Our New Rattan Creek Community Center

Rent a Booth!

*Don't forget to stop by the booths and
do some early Christmas shopping!*

This year we will have
Kid Friendly Inflatables!
Carnival type booths including:



**Cake Walk,
Bean Bag Toss
Face Painting
And more!**

Bring the family and have some fun!

Run for Fun! Seventeenth Annual Rattan Creek 5K Run September 27, at 7:30 a.m.



*Attention: Anyone who wants to have
fun! Even if you are not a marathoner, you'll enjoy
running or walking this 5K run.*

(No rain date for the run)

Registration: \$10 kids (under 12), \$15 for adults or \$5 without a t-shirt, before September 5. To register, complete the registration form in this issue and mail in with your entry fee.

Late registrants may not receive a t-shirt or Choice of size.

Run Start: Check in and late registration begins at 6:30 am in the Rattan Creek Park parking lot. Run starts at 7:30am at the intersection of Tamayo and Elkhorn Mountain.

Awards: Prizes for male and female winners in the following age categories:

11 & younger, 12-15 years, 16-19 years,
20-29 years, 30-39 years, 40-49 years,
50-65 years, over 65 years.

**For more information
See page 32 for entry form or
www.rattancreek.org**

Come Enjoy A Great Pancake Breakfast!



When: Sat. Sept 27th
Time: 8:30 – 10:30 am
Where: at the new Rattan Creek
Community Center

**Come and enjoy a great breakfast
and support your neighborhood
Boy Scout Troop # 164
Remember to Bring Money!**

Rattan Fest Blood Drive



The Blood and Tissue Center
of Central Texas ♦ Since 1951

**will be at Rattan Creek Park
from 10 am to 2pm**

*People are encouraged to pre-register
for an appointment slot at*

www.lonestardonor.com

Our Sponsor code is "RATTAN"

**For more information,
you can visit their website at
www.bloodandtissue.org**

Rattan Fest : September 27, 2008

<p>Name: _____</p> <p>Address: _____</p> <p>Phone Number: _____</p> <p>Please indicate quantity ordered (in front of size wanted)</p> <p>___S ___M ___L ___XL ___XXL</p> <p>Amount remitted: \$ _____</p>	<p>_____</p> <p>_____</p> <p>_____</p> <p>_____</p> <p>_____</p> <p>_____</p> <p>_____</p> <p>_____</p>
---	---

Rattan Fest will be held in the new community center, along with some activities that will be outdoors.

Rent a Booth:

This year the cost for booths will be:

\$ 5 for RCNA members

\$ 10 for non- members

\$10 for late registrations (after September 5)

This year the RCNA will have more of a carnival atmosphere.

- **Kid Friendly Inflatable**
- **Free SnoCones**
- **Cake walk,**
- **Bean bag toss,**
- **Face painting,**
- **and more.**

We hope to see you out for this day of fun!

If you are interested in volunteering, please contact Dallas Hall at 257-3494.

See you at Rattan Fest!!

This is a great opportunity to reach the neighborhood market and show off your talents or wares

- You will get a call regarding booth requirements.
- Each booth sponsor must provide his/ her own table, chair, tablecloth, and tent cover (if outdoors). Location on first come basis.
- You will not be allowed to put anything on the walls. If you need a back drop you need to bring your own.
- Set up begins at 9:00am.



just for our rattan creek neighbors



Have you seen this building? It's us – we're AMPLIFY, right on the corner of Pond Springs and Hunter's Chase. Maybe you've been to one of our free concerts or events. If not, we'd love to meet you. Stop by and visit us – and if you open a new checking account we'll give you two movie tickets and a gift certificate from Mangja Pizza.

If you were planning on paying off some high interest credit cards, taking a vacation, or maybe even figuring out how to pay for a college tuition, you can take advantage of our low Home Equity Loans with rates as low as 4.99% APR!*

We also have a lot of great services for you, like instant deposit online, mobile banking and money tracker. Our service is outstanding, and we love to entertain you with free concerts and festivals. Take advantage of our complimentary coffee and water every time you visit.

So, come by and meet our amazing team of Account Management Professionals and find out how we can help you Bank Less and Live More!



NCUA Federally Insured by NCUA.

* Fixed rate current as of 7/8/08, subject to change. Rates may vary based on term and creditworthiness. Term for 4.99% rate is up to 60 months. Loans subject to credit approval. Contact AMPLIFY for details.

AMPLIFY
Bank less. Live more.
goamplify.com

LITTLE WOODROW'S

Over 100 Beers
33 on Tap



Great Wine Selection by the Glass
Frozen Mimosas



Austin's Football Headquarters
"The Ultimate Football Experience"

Big Plasma
TV's
Everywhere!

**See you at
Little Woodrow's**

Watch our
144 sq ft
HDTV Screen!

Great Pizza, Wings & more Available!!

**Great Drink Specials -
All Weekend and Monday Night
\$2 Texas Beers**

Enjoy Our Famous Outdoor Patio and Fireplace

Call 918-2337 to book a party with us!

FREE Wi Fi	Call us to Have Your Next Party or Special Event 918-BEER	Cool Nights are Coming, Enjoy Our OUTDOOR FIREPLACE and Heated Patio
Golden Tee Live	LOCALS SPECIAL \$2 Pints of Lone Star All Day...Everyday	BIGGEST Horseshoe Bar in Texas
DARTS	6301 Parmer Lane...918-BEER	HOURS OF OPERATION Weekdays 3:00PM til 2:00AM Weekends 11:00AM til 2:00AM
	 Smoking IS Allowed	Please Don't Drink and Drive No Minors Under 21

